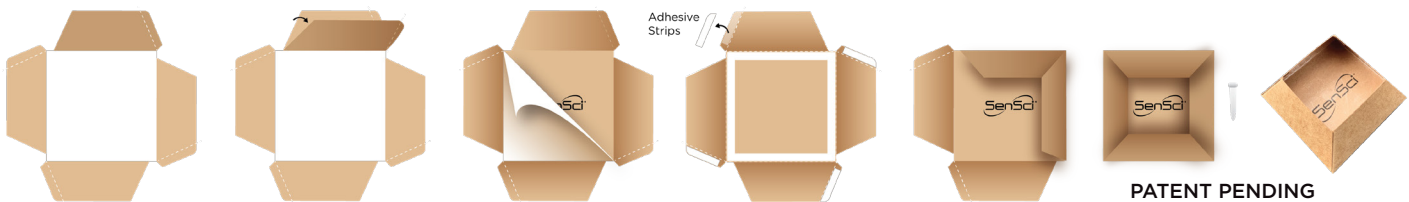




## Sensible Products for a Non-Sensible World

### CONSTRUCTING SENSCI® PYRAMID™ LP

1. Remove glueboard from packaging.
2. Fold in both directions along perforations to “loosen” glueboard sides.
3. Remove wax paper over large adhesive surface.
4. Bend each tab along perforations and then remove wax paper covering adhesive on tabs.
5. Attach tab to the inside of the adjacent side to construct Pyramid™ LP. Apply pressure to the tab when closing the sides to be sure that the adhesive is firmly stuck to the opposite side.
6. Adhesive strips on the perimeter of the bottom is to adhere the trap to the surface you plan on setting it. The adhesive strips do not need to be used and if you do use them, please be aware that the adhesive may destroy certain floors and surfaces and should only be used when the floor or surface is appropriate. Areas to be especially careful include linoleum, wood and any other surface that can be damaged by adhesives.
7. Place whichever bed bug or cockroach attractant you are using in the middle of the interior capture surface (where the SenSci® logo is) such as Activ<sup>CR</sup>™ or whichever roach attractant of choice. The original foil Activ<sup>TM</sup> packet cannot be used with SenSci® Pyramid™ LP as it will cover the entire glue surface. Activ<sup>CR</sup>™ is the appropriate choice for use with the smaller Pyramid™ LP.



#### Using Activ<sup>CR</sup>™ with SenSci® Pyramid™ LP



Remove one Activ<sup>CR</sup>™ vial from the packaging wearing gloves.



Place Activ<sup>CR</sup>™ vial on the inner capture surface and press vial to the glue to secure the vial.



Place Pyramid on a flat surface that bed bugs are known to travel along. Check monitors periodically.

#### Using a cockroach attractant with SenSci® Pyramid™ LP



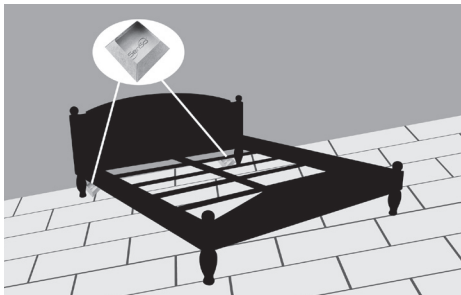
Place whichever cockroach attractant you are using; in the middle of the interior capture surface.



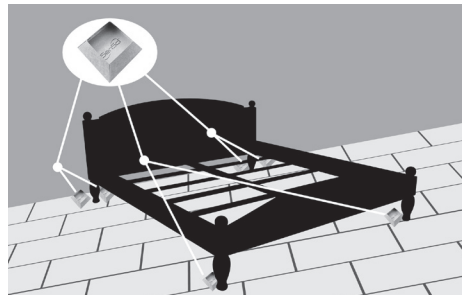
## PYRAMID™ PLACEMENT

Bed bugs are known to travel along seams and edges. Knowing that bed bugs use seams and edges to travel around an environment, it is reasonable to expect bed bugs to walk along baseboards until they gain access to their host on the bed or couch. Therefore, to increase the chance of detecting bed bugs with a monitor, place monitors in areas of suspected travel such as corners of the room or along baseboards near sleeping areas. Monitors should also be placed next to legs of the bed or couch to increase your odds of detecting bed bugs.

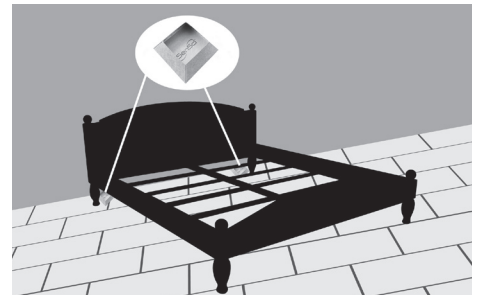
Place SenSci Pyramid flat on any surface bed bugs are known or suspected to travel or hide. Possible locations include but are not limited to along the baseboard and next to bed and couch legs. Inspect the monitor periodically for the presence of bed bugs. If bed bugs are found, dispose of the SenSci Pyramid by placing it in a sealed bag in an outdoor trash can. It is recommended to replace Pyramid once per year.



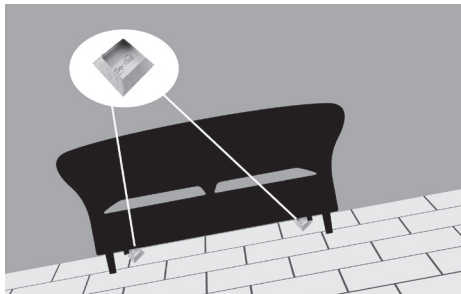
**Proactive Bed Bug Monitoring - Beds**  
Place one SenSci Pyramid next to each leg at the head of the bed (typical bed has 2 head legs).



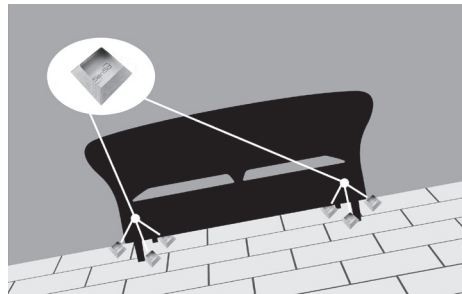
**Reactive Bed Bug Monitoring during or after an active infestation - Beds**  
Place a Pyramid next to each leg of the bed as well as on the floor against the baseboard on each side of the bed.



**Commercial Settings - Hotels**  
To proactively monitor for bed bugs place one SenSci Pyramid on the floor against the baseboard to each side of the bed.



**Proactive Bed Bug Monitoring - Couches/ Upholstered Furniture**  
Place one SenSci Pyramid next to each leg on the back corners of the couch.



**Reactive Bed Bug Monitoring during or after an active infestation - Couches/ Upholstered Furniture**  
Place a SenSci Pyramid next to every couch leg as well as on the floor against the baseboard on each side of the back of the couch.



**Commercial Settings - Offices**  
To proactively monitor for bed bugs place one SenSci Pyramid in every office cubicle on the floor against a cubicle wall. Monitors should also be placed within 3-5 feet of any area where personal belongings are stored as they are common routes of entry for bed bugs to office spaces.